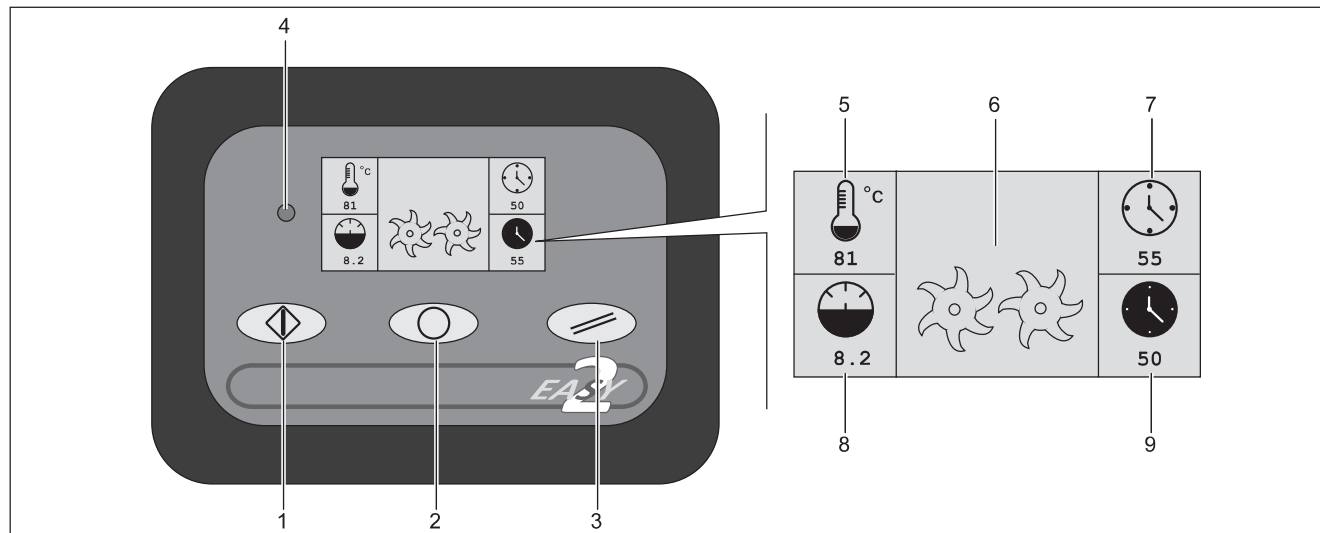


## 5. USING THE COMPRESSOR

### 5.2 CONTROLS, INDICATORS AND SAFETY DEVICES

#### EASY AIR 2 CONTROL PANEL

The control panel is made up of a set of buttons required for the main operational and control functions of the compressor.



#### Control panel

- 1 - START button
- 2 - STOP button
- 3 - RESET button
- 4 - Alarm Led

#### Display

- 5 - Air-end delivery temperature
- 6 - Compressor state
- 7 - Working hours (total)
- 8 - Pressure
- 9 - Working hours (duty)

#### Compressor state (6) - Meaning of simbols

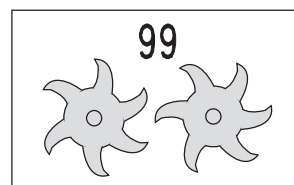
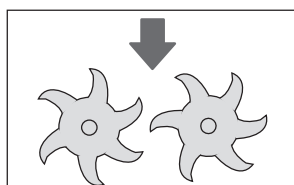
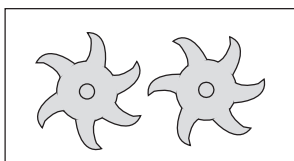
Compressor ON  
(rotors moving)

Compressor is charging  
(rotors moving)

Idle running time  
(rotors moving + countdown)

OR

Restart time  
(rotors flashing + countdown)



#### Air-end delivery temperature (5) - Possible alarms

The display shows the compressor temperature in °C or °F, it depends on the setting.

The high temperature alarm is 105°C (221 °F) and to reset the alarm the temperature has to decrease under 95 °C (203 °F). In case of high temperature alarm, the compressor stops (regardless its status) and is not possible to start it again.


The LOW temperature alarm is -5 °C (23°F), and to reset the alarm the temperature has to be above 10°C (50°F). In case of low temperature alarm, the compressor stops (regardless its status) and is not possible to start it again.

If the air-end temperature drops below – 40°C (- 40 °F) it means that the temperature sensor is short circuit; in this case the compressor stops immediately regardless of its status and it's not possible to start it again.

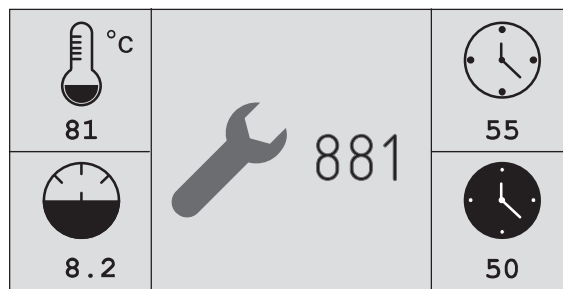
Check page 23, in order to recognize alarms signal and find a solution.

## 5. USING THE COMPRESSOR



### REMAINING HOURS TO MAINTENANCE

Push button  for 5 seconds to see **remaining hours to maintenance**.

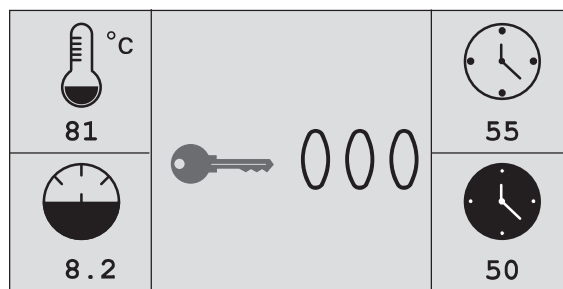
If time is already expired, a negative number will be shown (e.i -3) alternately to the compressor status.



### USER MENU - SETTING

Push button  and  together for at least 5 seconds to enter the **Setting parameters Area**.

The setting menus are accesible to different levels only entering a password.



#### To enter the password (111)

Push  once (display shows 100) and confirm pressing 

Push  once (display shows 110) and confirm pressing 

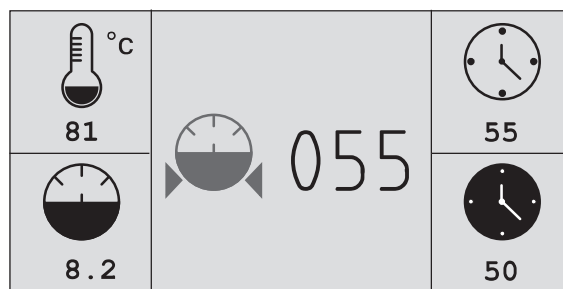
Push  once (display shows 111) and confirm pressing 

#### **MINIMUM PRESSURE** setting (\*)

Min = 5,5 bar / 80 psi - Max. 15 bar / 218 psi

N.B display does not show comma/dot:

055 = 5,5 bar (as shown on the example)

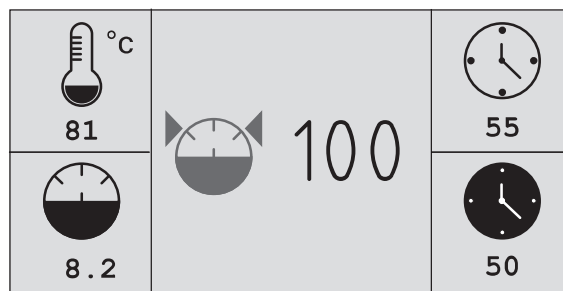


#### **MAXIMUM PRESSURE** setting (\*)

Min = 6 bar / 87 psi - Max. 15,5 bar / 225 psi


N.B display does not show comma/dot:




100 = 10,0 bar (as shown on the example)



(\*) Adjustment is only possible on models equipped with a pressure sensor (BP)..

#### TO MODIFY setting

push  (value is flashing) :

Push buttons  and  to change values , and  to confirm.

By pushing  you can confirm setting and move forward.



If you don't want to change the setting press  to move forward, or  to move backward.

At the end of the menus, display will show "OUT", press  to exit and go back to the compressor status .  
During the setting procedure, if any button is not pushed for 60 seconds, the control panel will exit automatically.

## 6 . COMPRESSOR MAINTENANCE

### 6.2 DIAGNOSING THE ALARM STATUS/INCONVENIENCES-FAULTS

Before doing any job on the compressor ensure that:

- The main ON/OFF switch is turned Off (position "0")
- The button EMERGENCY/STOP is pressed in security position
- The compressor is shut-off from the compressed air system
- The compressor and the internal pneumatic circuit are completely de-pressurised

If you are unable to rectify the anomaly encountered on your compressor contact your nearest authorised service centre.

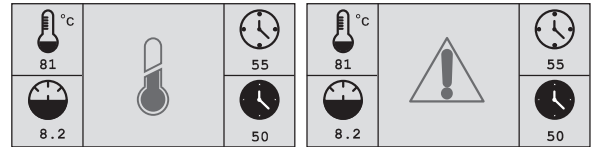
#### Alarm

TEMPERATURE SENSOR broken or disconnected Compressor does not start or stops.

Press  to reset.


Alarm can be reset only once the problem is solved.

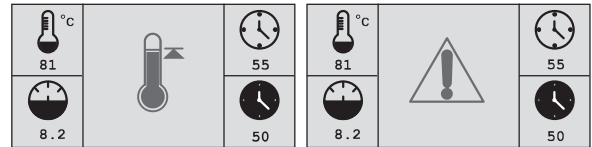
when these symbols are flashing alarm is **ON**



#### Alarm


HIGH TEMPERATURE (> 105°C/221°F)  
Compressor stops.

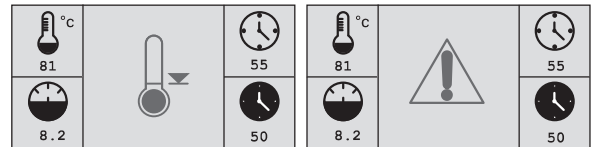
Press  to reset, only when the temperature is lowered at least 10°C.



#### Alarm

LOW TEMPERATURE (< -5°C/23°F)  
Compressor does not start or stops.

Press  to reset, only if the temperature is +10°C / 50°F or more.

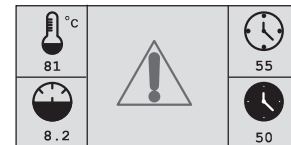
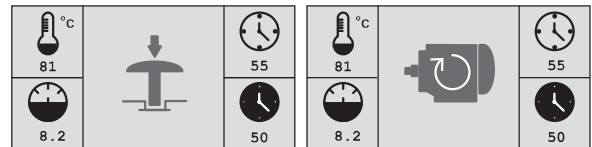


#### Alarm

MOTOR WRONG SENSE OF ROTATION or  
EMERGENCY STOP PRESSED  
Compressor does not start or stops.

Press  to reset.

Alarm can be reset only once the problem is solved.

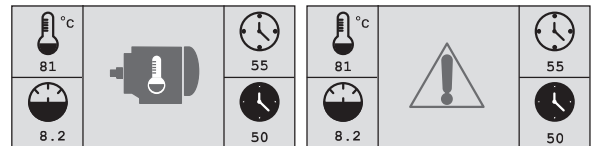


#### Alarm

MOTOR THERMAL PROTECTION  
Compressor stops.

Press  to reset.

Alarm can be reset only once the motor temperature reaches acceptable value.



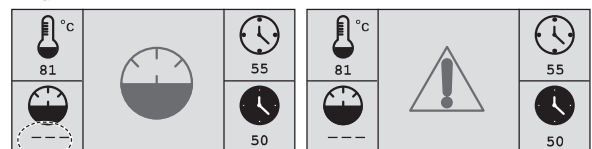
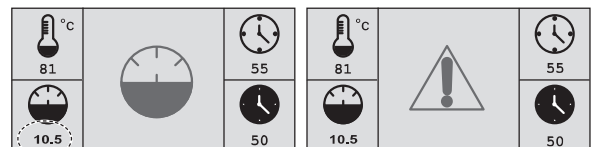
#### Alarm

HIGH PRESSURE or  
PRESSURE SENSOR broken or disconnected (\*)  
Compressor does not start or stops.

Press  to reset.

Alarm can be reset only once the problem is solved.

(\*) To be ignored for version with pressure switch.



#### Alarm

MAINTENANCE TIME EXPIRED  
Compressor keep on working.

Alarm can be reset only after maintenance is done.  
Contact your local after sale service.

